



Colloque international sur l'étude, la restauration et la gestion de l'alose
International symposium on restoration and conservation of shads

General presentation of the LIFE+ project

Andreas SCHARBERT (RhFV , Germany)

Session 1 : Les actions du programme Life+ Alose / Results of the Allis shad project

Bergerac
14-15 octobre 2015



How it began

Feasibility studies about the potential for an Allis shad reintroduction project (2003 to 2006)

Background:

- Extinctions in the major part of the distribution area (e.g. the Rhine)
- Large and vital population in the GGD basin (donor population)
- First successful attempts to artificially breed and mark Allis shad (at St. Seurin research station by CEMAGREF)
- Declaration of support and cooperation between France (CEMAGREF) and Germany (RhFV, LOBF, HIT- environment and nature conservation foundation)
- Preparation of a LIFE proposal application



How it went on

The LIFE project “The reintroduction of the Allis shad in the Rhine basin” (2007 to 2010)

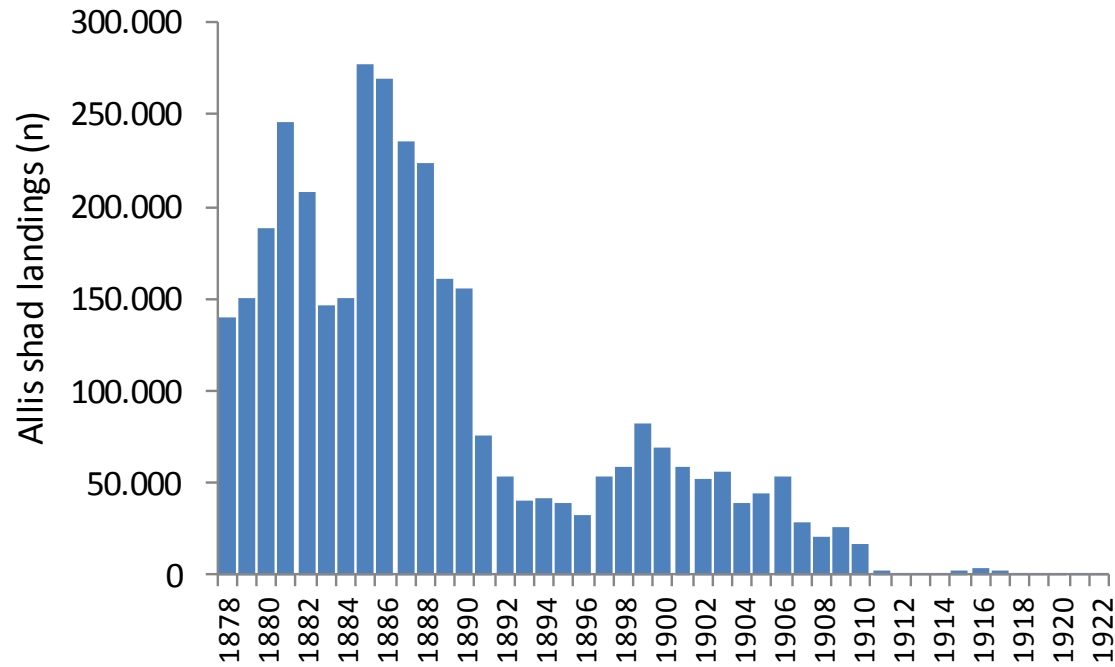
Objectives and achievements:

- Establishing of mass breeding and mass marking protocols for the Allis shad in France (MIGADO)
- Construction of the first Allis shad hatchery in Bruch/Aquitaine
- Studies on the suitability of habitat conditions in the Rhine system (stocking, spawning)
- Initial stocking of up to 5 Mio Allis shad larvae in the Rhine basin
- Accompanying monitoring measures



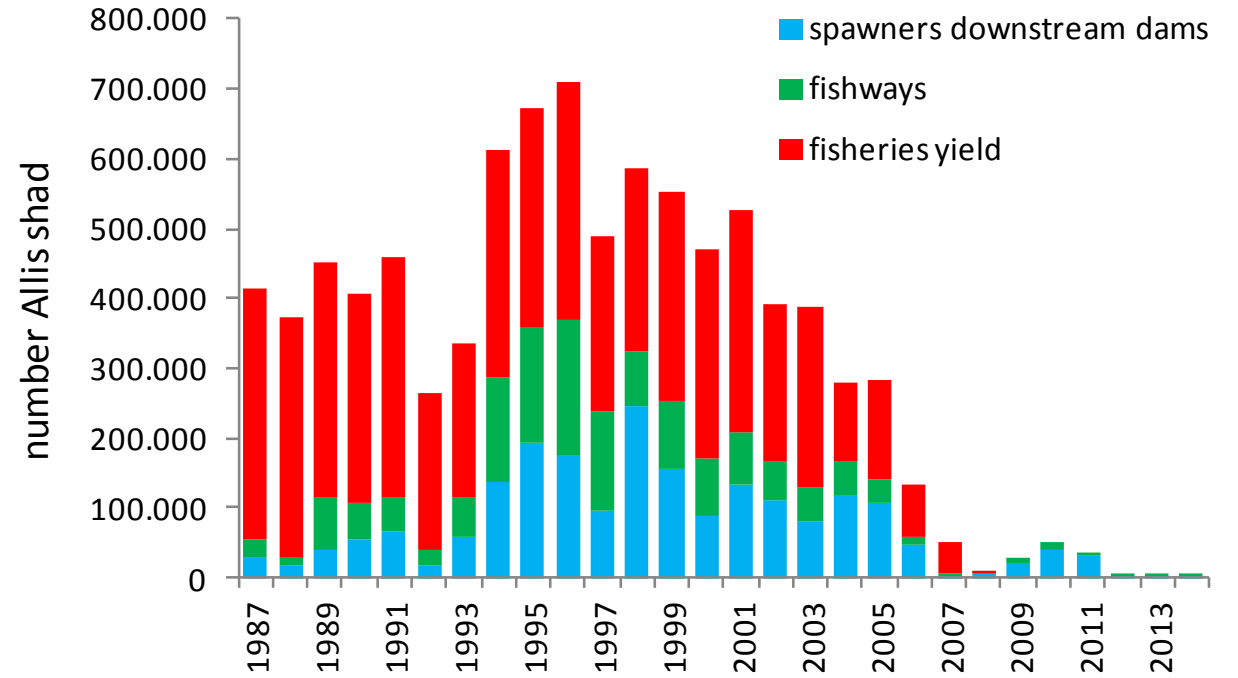
Two European river systems formerly housing large populations of the Allis shad

Rhine



Allis shad fisheries yield in the dutch Rhine section around the turn of the century (after de Groot 1992)

Gironde-Garonne-Dordogne



Population size in the GGD basin (after COGEPOMI)



The Life+ Project

„Conservation and restoration of the Allis shad in the Gironde and Rhine watersheds“ (LIFE09 NAT/DE/000008)

Profile



Coordinating beneficiary:

Landesamt für Natur,
Umwelt und Verbraucherschutz
Nordrhein-Westfalen



Duration: 2011-2015

Budget : 1.605.827 €

EU-share: 749.414 € (49,16 %)

Associated beneficiaries and co-financers:



Hessisches Ministerium für Umwelt,
Klimaschutz, Landwirtschaft und
Verbraucherschutz





The objectives in the two basins

Rhine

Establishing a population in the Rhine

- Continuation of a stocking programme (by releasing larvae which are obtained from the Allis shad hatchery in the Aquitaine and out of genitor fish from the GGD basin in the Rhine basin)
- Monitoring measures to determine stocking efficiency and post-stocking survival of the YOY
- Detection of returning adults from the first releases
- Identification of spawning activities
 - Ex situ stocks for Allis shad and development of a maturation index
 - Transfer of know-how of aquaculture from France to Germany

Gironde-Garonne-Dordogne

Identifying the causes for the decline of the hitherto largest remaining population

- Surveys on the efficiency and requirements towards fishways
- Surveys on the YOY in the rivers Garonne and Dordogne
- Evaluation of these factors in conjunction with further possible causes